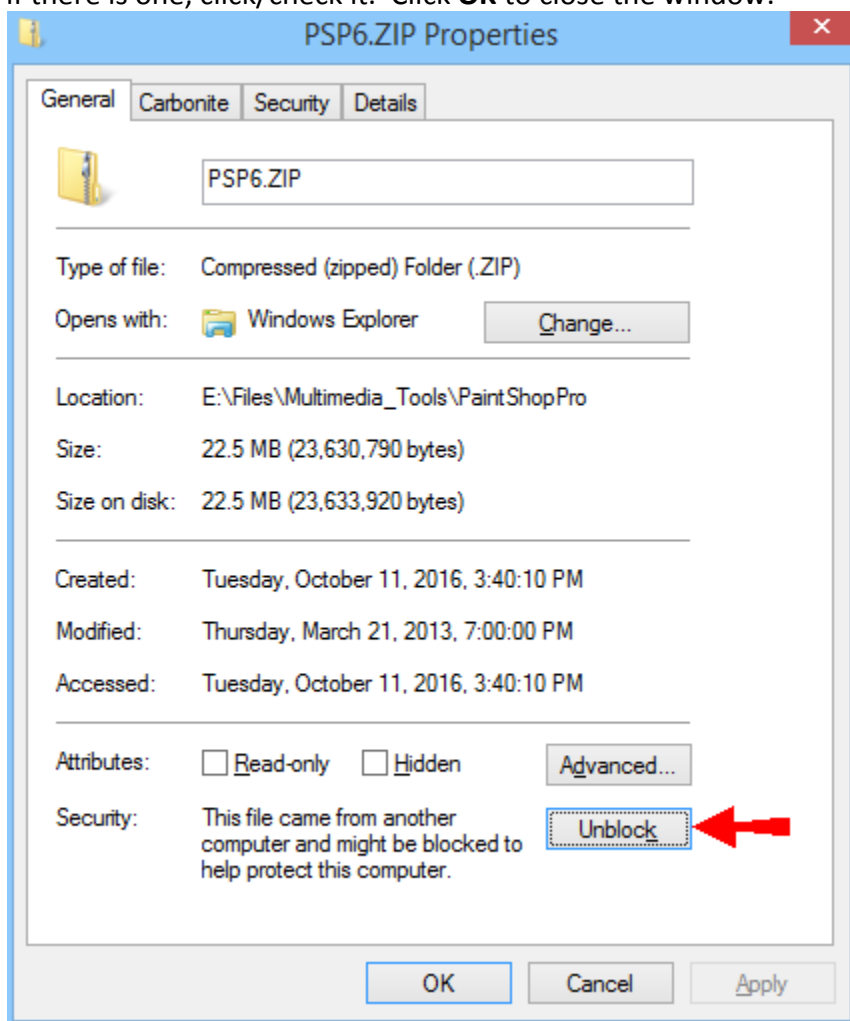
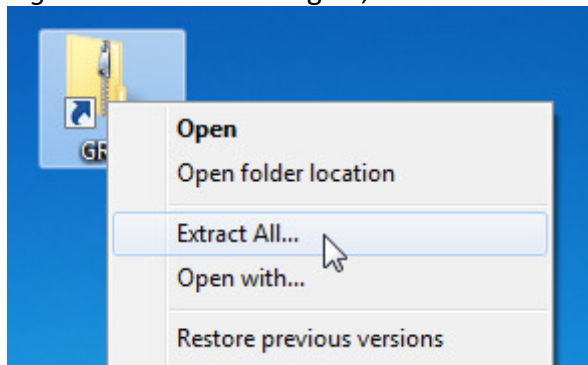


Paint Shop Pro 6 setup instructions for Windows Vista/7/8/10+

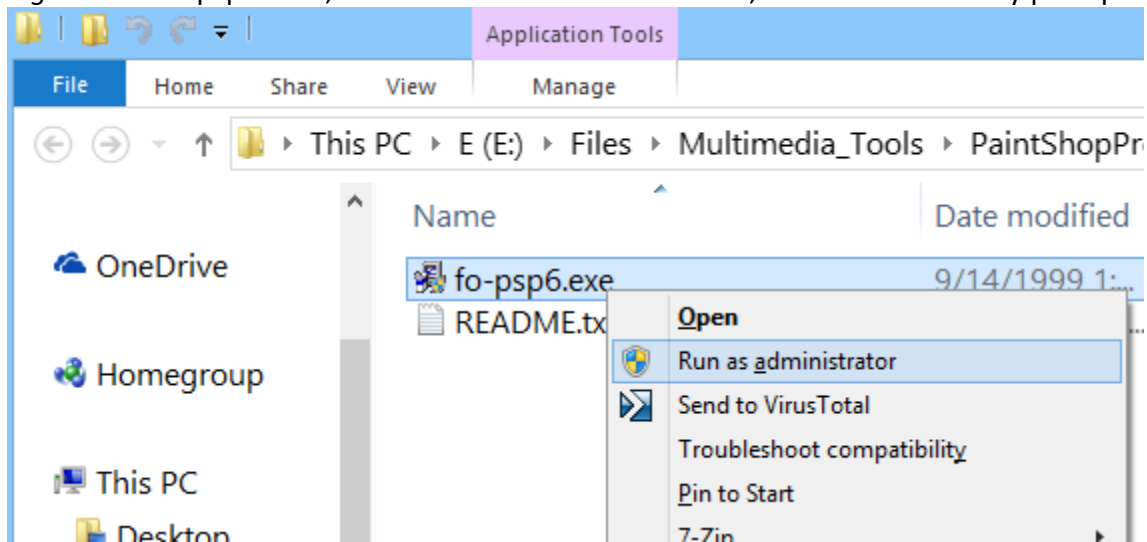
1. Here's the link to download Paint Shop Pro 6:
http://files.msassist.com/Multimedia_Tools/PaintShopPro/PSP6.ZIP
Click the link to download the file ...but don't open it yet!
2. After downloading/saving the ZIP file, go to your "Downloads" folder (or wherever you saved it), *right-click* "PSP6.ZIP", then click **Properties**.
3. When the Properties window appears, look for an **Unblock** button or checkbox near the bottom – if there is one, click/check it. Click **OK** to close the window.



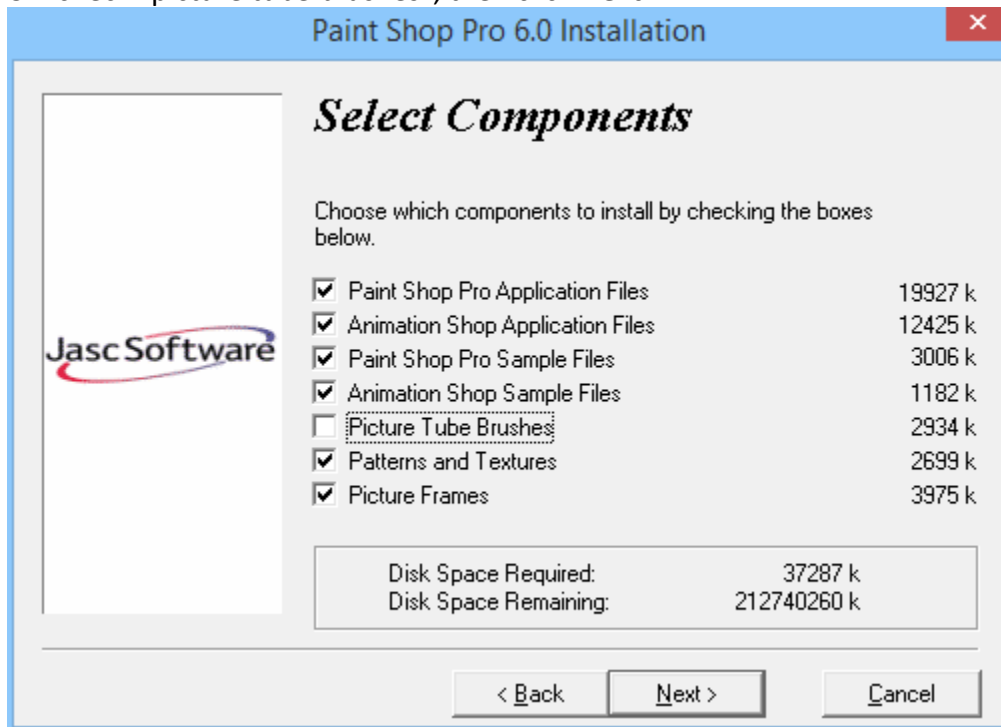
4. *Right-click* "PSP6.ZIP" again, then click **Extract All**.




- Click the **Extract** button. After a few seconds, a window should open, showing you two files, "fo-bsp6.exe" and "README.TXT"
- Right-click* "fo-bsp6.exe", then click **Run as administrator**, and **Yes** if a security prompt appears.



- Once the installer starts, click **Accept** at the license agreement, then **Next**.
- UN-check "picture tube brushes", then click **Next**.

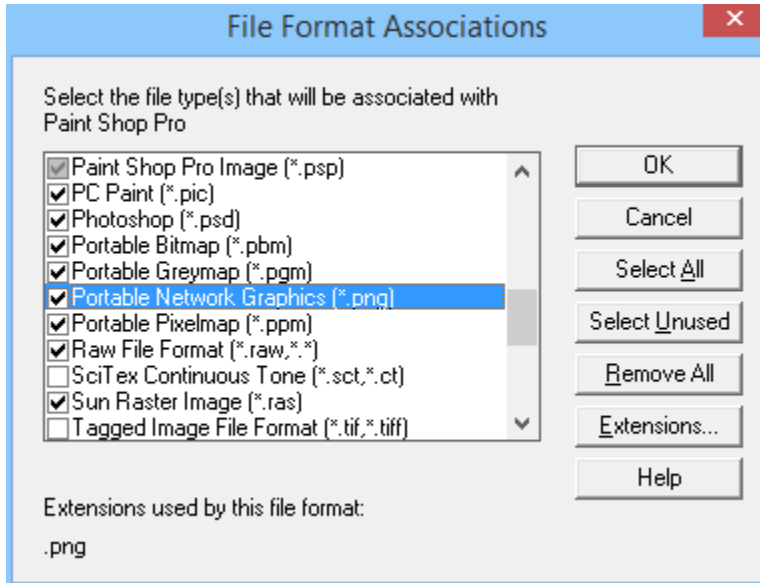


- Click **Next** again, wait for the installer to finish (it's quick), then click **No** at the "View Readme" prompt. Paint Shop Pro is now installed – you're halfway done with setup!
- Find (*but don't click!*) the "Paint Shop Pro 6" icon in the Start menu: Click the **Start** button (the Windows logo in the lower-left corner of your screen), then type "paint shop" to search for it. *Right-click* the  **Paint Shop Pro 6** icon, then click **Run as administrator**, and **Yes** if a security prompt appears.

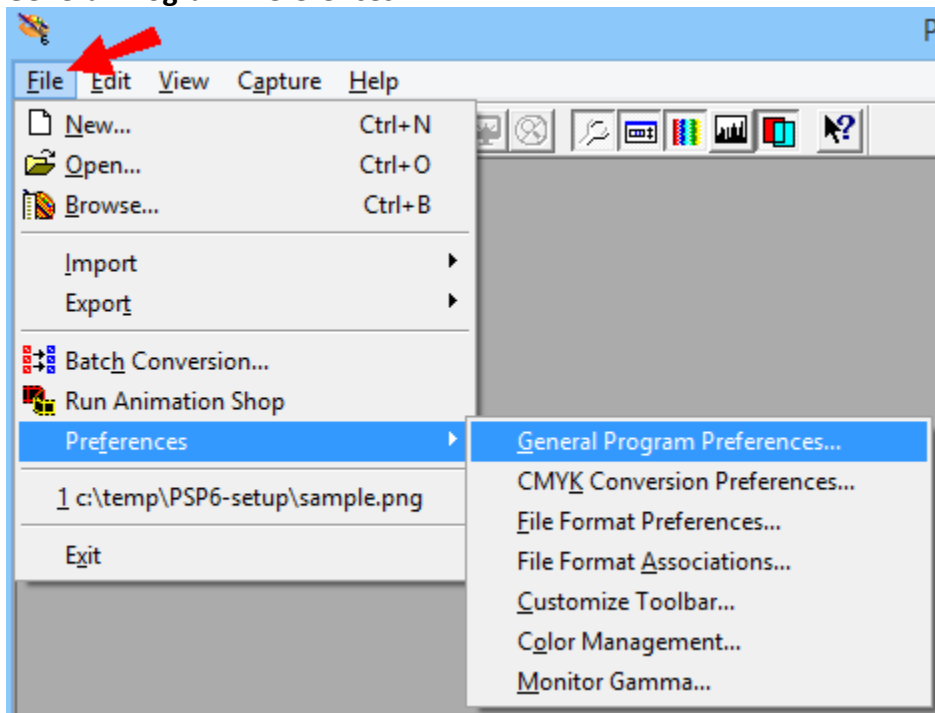
11. The first time Paint Shop Pro starts up, a "File Format Associations" window will appear. If PSP6 will be your primary image-editing app, click the **Select All** button. Otherwise, click **Select Unused**, and if using PSP6 for web-development, make sure these items are checked:

- CompuServe Graphics Interchange (*.gif)
- JPEG – JFIF Compliant (*.jpg,*.jif,*.jpeg)
- Portable Network Graphics (*.png)

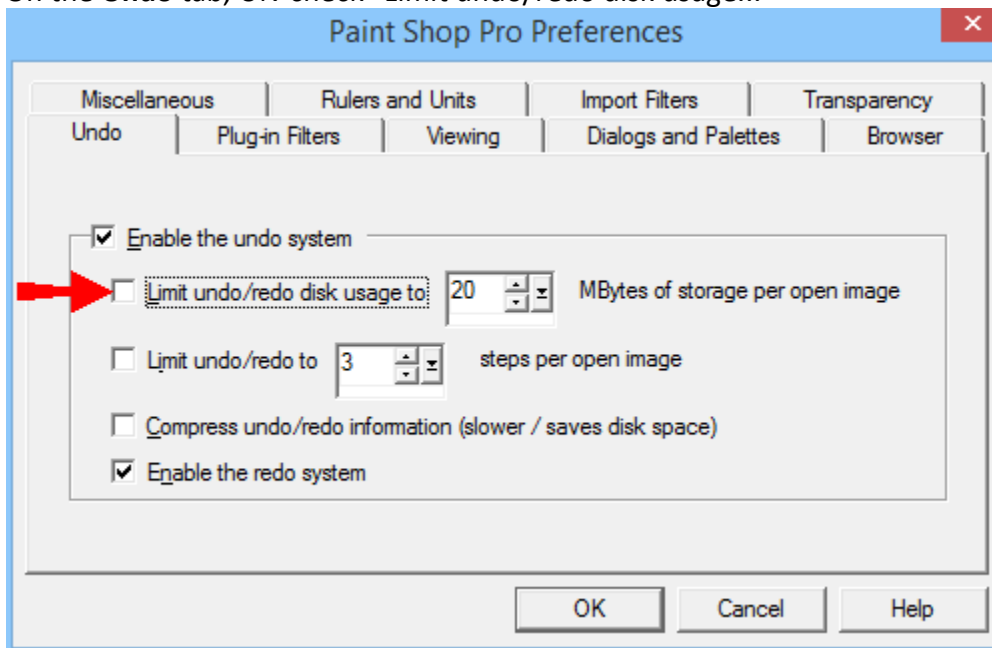
...then click **OK** to close the window.



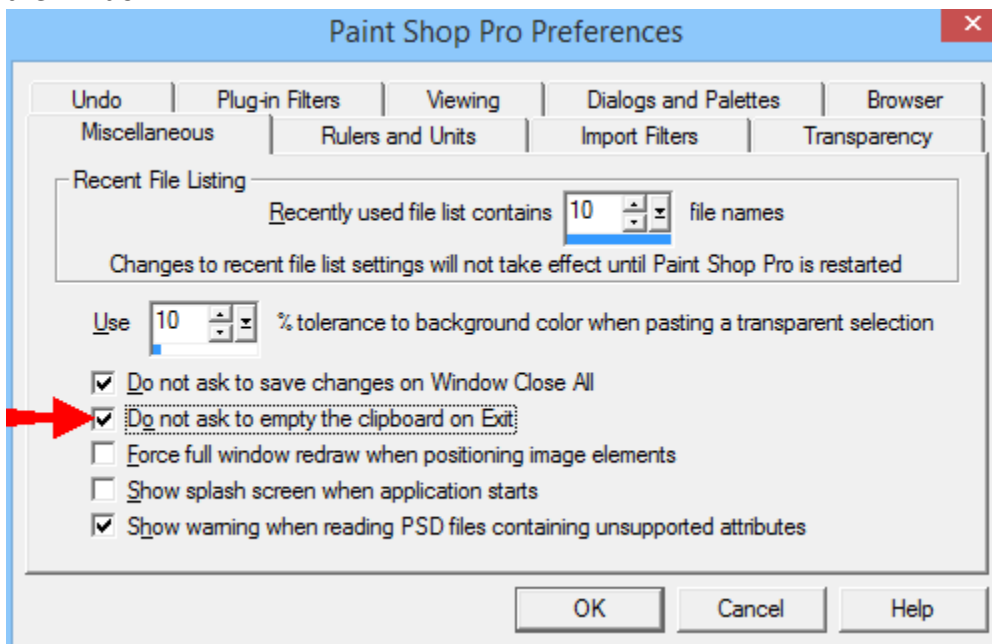
12. A "Tip of the day" window will appear. Close it, then click the **File** menu, **Preferences**, then **General Program Preferences**.



13. On the **Undo** tab, UN-check "Limit undo/redo disk usage..."



14. On the **Miscellaneous** tab, check "Do not ask to empty the clipboard on Exit", then click **OK** to close the window.




15. Close Paint Shop Pro to save the settings. You're done, except for one optional step...

16. (OPTIONAL) Enable the built-in "Help" and "How-To" features:

Paint Shop Pro has instructions available, through the **Help** menu, the **Help** button on certain screens, or by pressing the **[F1]** key on your keyboard at any time. If you try to access the Help on a modern computer, you'll probably get an error like "Feature not included", "Help not supported", or "Cannot display this help file". There's a Windows update that fixes the problem – just click the link below, save the file, then open it and follow the (quick and easy) prompts to install the update:

<http://msassist.com/files/Windows10/WinHLP-setup.exe>

From now on, you can start Paint Shop Pro in three ways:

- Click the  **Paint Shop Pro 6** icon in the Start menu.
- Double-click any GIF, JPG, or PNG image file stored on your computer.
- Right-click a folder containing image files, then click **Browse with Paint Shop Pro**.

