

Compaq Evo D310v Series Personal Computer

Illustrated Parts Map

Microtower Models, Celeron and Pentium Processors



COMPAQ

© 2002 Hewlett-Packard Company

Compaq logo, and Presario are trademarks of Compaq Information Technologies Group, L.P.

Intel, Pentium, and Celeron are trademarks of Intel Corporation in the United States and other countries.

All other product names mentioned herein may be trademarks of their respective companies.

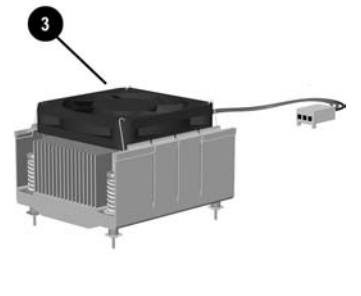
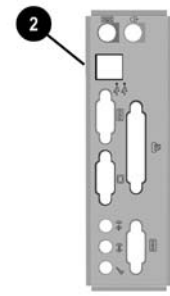
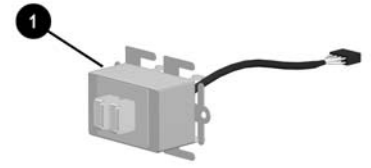
Compaq shall not be liable for technical or editorial errors or omissions contained herein. The information in this document is provided "as is" without warranty of any kind and is subject to change without notice. The warranties for Compaq products are set forth in the express limited warranty statements accompanying such products. **Nothing herein should be construed as constituting an additional warranty.**

September 2002

Document Part Number 311328-001



Spare Part Number 311426-001



Miscellaneous Parts

1	Front I/O device (dual USB) with bracket	308422-001
2	Rear I/O panel	309481-001
3	Heatsink with captive retaining screws	307085-001
*	Mouse, scroll type	253113-001
*	Battery, real-time clock	153099-001
*	Bezel blank	251618-001

*Not shown

Keyboards (not illustrated)

Keyboard	251623-xxx		
French Canadian	-121	Polish	-241
Japanese	-291	Taiwanese	-AB1
Latin American Spanish	-161	U.S.	-001
Peoples Republic of China	-AA1		

Documentation and Packaging (not illustrated)

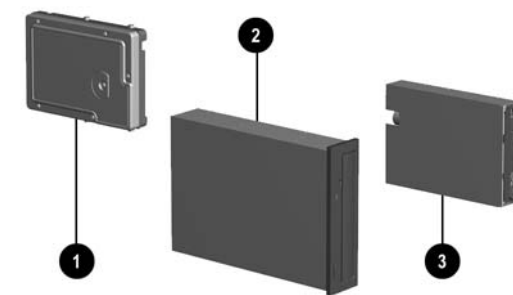
Service Reference Guide	259668-001
Quick Troubleshooting Guide	153837-001
Illustrated Parts Map	311426-001
Return kit	207742-001



System Unit

1	Front bezel with bezel blank	308421-001
2	Power supply, PFC	307161-001
*	Power supply, non-PFC	307160-001
3	Access panel	275147-001
4	Chassis	not spared

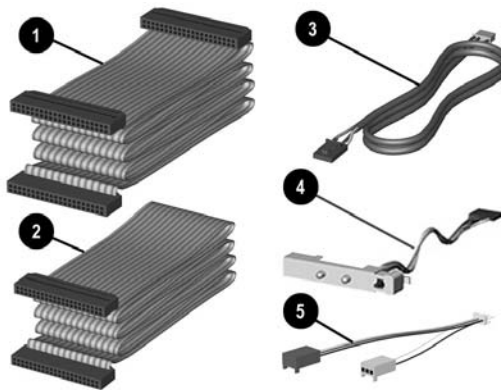
* Not shown



Mass Storage Devices

1	20-GB\5400 RPM Hard drive	254451-001
*	40-GB\7200 RPM Hard drive	236921-001
2	48X CD-ROM drive	232320-001
*	CD RW Drive, 48/12/48X	305143-001
3	Diskette drive, 3.5-inch	251629-001

*Not shown

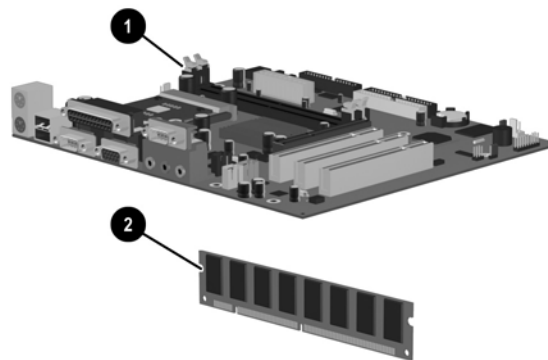


Cables

1	Optical drive cable (280 mm)	271722-001
*	Diskette drive cable (234 mm)	309287-001
2	Hard drive cable (240 mm)	271721-001
3	Audio cable	271720-001
4	Cable, LED/Switch with holder	279960-001
5#	Fan jumper cable	307084-001

*Not shown

#See page 2 for installation instructions.

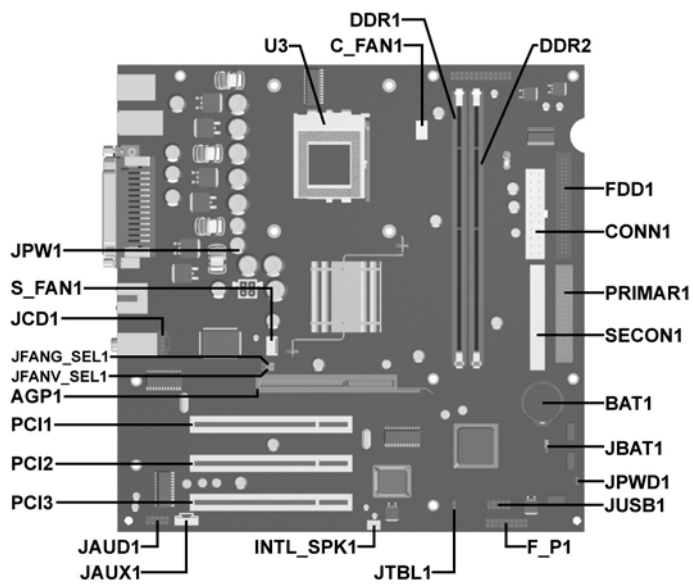


Standard and Optional Boards

1#	System board	289767-001
*#	Celeron 1.7 GHz processor	288691-001
*#	Pentium 1.8 GHz processor	306779-001
2	128 MB Memory module	285648-001
*	256 MB Memory module	285649-001

* Not shown

#Spared with alcohol wipe and thermal grease



System Board Connectors and Jumpers (position of some untitled components may vary in location)

AGP1	AGP slot	JFANG_SEL1	Fan speed control, ground #
BAT1	Battery	JFANV_SEL1	Fan speed control, voltage#
C_FAN1	Heatsink fan	JPWD1	Password
CONN1	Power, main	JPW1	3.3V_Aux
DDR1	DIMM 1	JTBL1	Boot block
DDR2	DIMM2	JUSB1	Front USB
FDD1	Diskette	PCI1	PCI Expansion slot 1
F_P1	Power switch/LED	PCI2	PCI Expansion slot 2
INTL_SPK1	Speaker, internal	PCI3	PCI Expansion slot 3
JAUD1	Front panel audio header	PRIMAR1	Primary IDE
JAUX1	CD audio - Drive #2	SECON1	Secondary IDE
JBAT1	Clear CMOS	SFAN_1	Chassis fan
JCD1	CD audio - Drive #1	U3	Processor socket

Both jumpers must be set the same.
Jumpers on pins 1 & 2 = system and CPU fan control set for variable speed operation depending on the load. Jjumpers on pins 2 & 3 = system and CPU fan control set for full speed regardless of the load.

System Hardware Interrupts

IRQ	System Function	IRQ	System Function
0	Timer Interrupt	8	Real-Time Clock
1	Keyboard	9	Unused
2	Interrupt Controller Cascade	10	Unused, available for PCI
3	Serial Port (COM B)	11	Unused, available for PCI
4	Serial Port (COM A)	12	Mouse
5	Unused, available for PCI	13	Coprocessor
6	Diskette Drive	14	Primary ATA (IDE) Controller
7	Parallel Port (LPT 1)	15	Secondary ATA (IDE) Controller

Clearing CMOS*

The computer's configuration (CMOS) may occasionally be corrupted. If it is, it is necessary to clear the CMOS memory using JBAT1 by performing the following procedure:

1. Prepare the computer for disassembly.

CAUTION: The power cord must be disconnected from the power source before changing the jumper setting. (NOTE: All LEDs on the board should be OFF). Failure to do so may damage the system board

2. Remove the access panel.
3. Remove the JBAT_1 jumper from pins 1 and 2 and place it on pins 2 and 3. Keep the jumper there for 5 seconds.
4. Replace the jumper on pins 1 and 2.
5. Replace the access panel.

6. Turn the computer on and run F10 Computer Setup (Setup utility) to reconfigure the system.

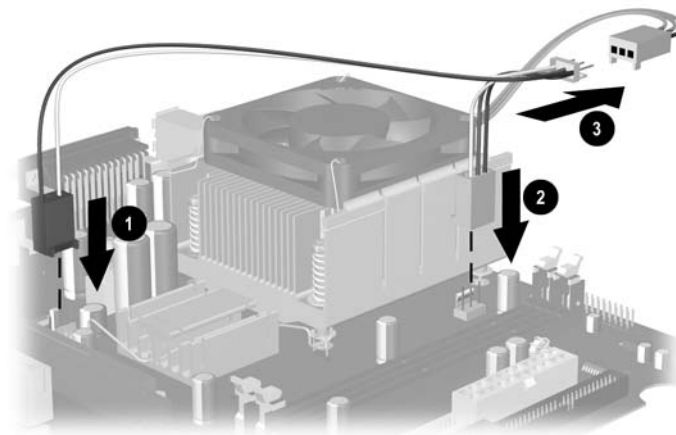
* When the jumper is removed, both the power-on password and the setup password become invalid because both are stored in the configuration memory. You will need to reset the passwords.

Disabling or Clearing the Power-On and Setup Passwords*

1. Turn off the computer and any external devices, and disconnect the power cord from the power outlet.
2. Remove the access panel.
3. Locate the header and jumper labeled JPWD.
4. Remove the jumper from pins 1 and 2. Place the jumper over pin 2 only, in order to avoid losing it.
5. Replace the access panel.
6. Plug in the computer and turn on power. Allow the operating system to start.
NOTE: Placing the jumper on pin 2 clears the current passwords and disables the password features.
7. To re-enable the password features, repeat steps 1-3, then replace the jumper on pins 1 and 2.
8. Repeat steps 5-6, then establish new passwords.

Refer to the F10 Computer Setup (Setup utility) instructions to establish new passwords.

* When the jumper is removed, both the power-on password and the setup password become invalid because both are stored in the configuration memory. You will need to reset the passwords.



Installing the Fan Jumper Cable

Ensure that the fan jumper cable is properly installed before installing the access panel and starting the computer.

1. Connect the two-wire connector to S_FAN1 ❶.
2. Connect the three-wire connector to C_FAN1 ❷.
3. Connect the central connector to the connector coming from the power supply ❸.